

RCI Technologies

FRS 660

**Complete NEMA 4 508A Listed
Automatic Fuel
Recirculating System**



"THE PERMANENT SOLUTION"
Made in the U.S.A.



FRS 660 NEMA 4 UL 508A Listed Fuel Recirculating Systems



Diesel fuel begins to deteriorate as soon as it is produced. This problem poses no threat if the fuel is consumed quickly. Unfortunately, diesel fuel may be stored for years. This deterioration affects the fuel's pumpability and combustibility. Aged fuel tends to re-polymerize, forming submicronic particles, causing excessive wear to injectors and injector pumps, clogged filters and sludge deposits.

By recirculating your fuel stores, you can fight the contamination battle by constantly recirculating the fuel and removing water, dirt and algae before it builds up and poses a threat to your equipment. When your fuel is free from contaminants, your equipment will show increased reliability and performance, as clean fuel burns cleaner.

The FRS 660 Series of fuel recirculating systems are a pre-engineered integrated system of packaged pump, motor, programmable controls and accessories pre-plumbed and pre-wired. The RCI Fuel Recirculating System provides the user with the reliability of a job-engineered system, matched components and factory assembly. These systems are designed for use with fuel oil (class II or class III combustible liquids having a flash point of 100° F or higher).

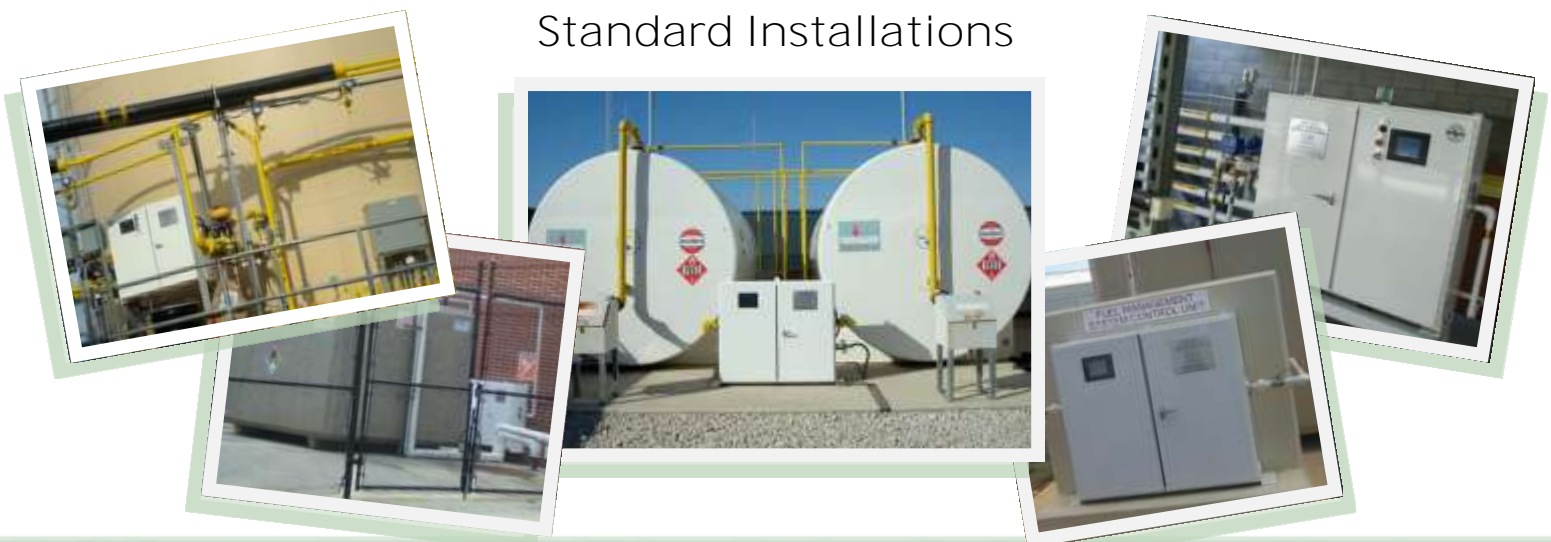
The RCI FRS 660 systems are fully enclosed and suitable for wall or pad mounting. All devices, wiring, electrical and plumbing are contained in a **NEMA 4 UL** listed weatherproof enclosure. Isolated internal compartments are provided for mechanical and electrical components. External ports are provided for connection of field plumbing. The enclosure includes a drip catch basin with internal and external alarm and leak detection.

Routine circulation with the FRS 660 System will remove 99.9% of water and up to 95% to 98% of dust, dirt and other normal and natural contaminants found in all diesel fuels, including sludge and algae. In addition to dramatically extending filter life and improving engine performance, it increases combustibility. Even today's "clean" diesel fuel will easily become contaminated during transportation and storage. RCI Technologies' Fuel Purifiers are **Green Clean** certified and contain no filters and no moving parts. There are no elements or cartridges to clean, change or replace.

Standard Features

- **NEMA 4 UL 508A** Listed Weatherproof Enclosure
- **Green Clean** Certified
- Powder-Coated White with Key Lock Security
- 6" Operator Touch Panel Interface
- NPT Brass Inlet/Outlet Ball Valves
- System Emergency Shut-Down Points
- Recirculating Pump with Pressure Relief Safety Switch
- Cabinet Leak Sensor with Alarm Contacts—Pump Shut-Off
- RCI Universal Fuel Purifier
- Magnetic Fuel Decontamination Unit

Standard Installations



STANDARD FEATURES

	G.P.M.	PLC	# OF TANKS	INLET / OUTLET/BRASS BALL VALVES	BRASS FLOW SWITCH	PUMP	ELECTRICAL	PHASE	Y STRAINER	MEASUREMENTS
<i>ENTRY LEVEL SINGLE TANK (w/ System Cabinet)</i>										
FRS 660-5-EL-UL	5	Y	1	1/2" NPT	-	1/3 hp	115-208/230 VAC	1ph / 60 hz	-	36" x 36" x 12"
FRS 660-11-EL-UL	11	Y	1	1" NPT	-	1hp	115-208/230 VAC	1ph / 60 hz	-	48" x 42" x 12"
FRS 660-25-EL-UL	25	Y	1	1" NPT	-	2 hp	115-208/230 VAC	1ph / 60 hz	-	48" x 42" x 12"
<i>SINGLE TANK (w/ System Cabinet)</i>										
FRS 660-5-UL	5	Y	1	1/2" NPT	-	1/3 hp	115-208/230 VAC	1ph / 60 hz	-	36" x 36" x 12"
FRS 660-11-UL	11	Y	1	1" NPT	-	1hp	115-208/230 VAC	1ph / 60 hz	-	48" x 42" x 12"
FRS 660-25-UL	25	Y	1	1" NPT	-	2 hp	115-208/230 VAC	1ph / 60 hz	-	48" x 42" x 12"
FRS 660-60-UL	60	Y	1	2" NPT	-	10 hp	115-208/230 VAC	1ph / 60 hz	2"	30" x 30" x 8"
FRS 660-150-UL	150	Y	1	2" NPT	-	20 hp	230/3/60	3 ph / 60 hz	2"	30" x 30" x 8"
<i>SINGLE TANK (w/out System Cabinet)</i>										
FRS 660-5-OF-UL	5	Y	1	1/2" NPT	-	1/3 hp	115-208/230 VAC	1ph / 60 hz	1/2"	36" x 36" x 12"
FRS 660-11-OF-UL	11	Y	1	1" NPT	-	1hp	115-208/230 VAC	1ph / 60 hz	1"	48" x 42" x 12"
<i>MULTIPLE TANK UNITS (w/ System Cabinet)</i>										
FRS 660-5-MTU-2-UL	5	Y	2	1/2" NPT	-	1/3 hp	115-208/230 VAC	1ph / 60 hz	1/2"	48" x 42" x 12"
FRS 660-11-MTU-2-UL	11	Y	2	1" NPT	-	1hp	115-208/230 VAC	1ph / 60 hz	1"	48" x 42" x 12"
FRS 660-11-MTU-3-UL	11	Y	3	1" NPT	-	1hp	115-208/230 VAC	1ph / 60 hz	1"	48" x 42" x 12"
FRS 660-11-MTU-4-UL	11	Y	4	1" NPT	-	1hp	115-208/230 VAC	1ph / 60 hz	1"	48" x 42" x 12"
FRS 660-25-MTU-2-UL	25	Y	2	1" NPT	-	2 hp	115-208/230 VAC	1ph / 60 hz	1"	48" x 42" x 12"
FRS 660-25-MTU-3-UL	25	Y	3	1" NPT	-	2 hp	115-208/230 VAC	1ph / 60 hz	1"	48" x 42" x 12"
FRS 660-25-MTU-4-UL	25	Y	4	1" NPT	-	2 hp	115-208/230 VAC	1ph / 60 hz	1"	48" x 42" x 12"
<i>MULTIPLE TANK UNITS (w/out system cabinet)</i>										
FRS 660-5-MTU-2-OF-UL	5	Y	2	1/2" NPT	-	1/3 hp	115-208/230 VAC	1ph / 60 hz	1/2"	48" x 42" x 12"
FRS 660-11-MTU-2-OF-UL	11	Y	2	1" NPT	-	1hp	115-208/230 VAC	1ph / 60 hz	1"	48" x 42" x 12"
FRS 660-25-MTU-2-OF-UL	25	Y	2	1" NPT	-	2 hp	115-208/230 VAC	1ph / 60 hz	1"	48" x 42" x 12"
<i>REMOTE-PUMP, SINGLE TANK (w/ system cabinet) - Uses "Others" pump - 24 Hr/7 Day Programable - 3 Position Selector Switch & 5 Push to test indicator lines</i>										
FRS 660-7-RPU-UL	7	Y	1	1/2" NPT	1/2" NPT		Uses "Others" pump		1/2"	48" x 42" x 12"
FRS 660-40-RPU-UL	40	Y	1	1" NPT	1" NPT		Uses "Others" pump		1"	48" x 42" x 12"
FRS 660-90-RPU-UL	90	Y	1	2" NPT	2" NPT		Uses "Others" pump		2"	60" x 36" x 12"
<i>REMOTE-PUMP, SINGLE TANK (w/out system cabinet) - Uses "Others" pump - 24 Hr/7 Day Programable - 3 Position Selector Switch & 5 Push to test indicator lines</i>										
FRS 660-7-RPU-OF-UL	7	Y	1	1/2" NPT	1/2" NPT		Uses "Others" pump		1/2"	48" x 42" x 12"
FRS 660-40-RPU-OF-UL	40	Y	1	1" NPT	1" NPT		Uses "Others" pump		1"	48" x 42" x 12"
FRS 660-90-RPU-OF-UL	90	Y	1	2" NPT	2" NPT		Uses "Others" pump		2"	
<i>REMOTE-PUMP, MULTIPLE TANK SYSTEM (w/ system cabinet) - Uses "Others" pump - 24 Hr/7 Day Programable - 3 Position Selector Switch & 5 Push to test</i>										
FRS 660-7-RPU-MTU-2-UL	7	Y	2	1/2" NPT	1/2" NPT		Uses "Others" pump		1/2"	48" x 42" x 12"
FRS 660-40-RPU-MTU-2-UL	40	Y	2	1" NPT	1" NPT		Uses "Others" pump		1"	48" x 42" x 12"
FRS 660-90-RPU-MTU-2-UL	90	Y	2	2" NPT	2" NPT		Uses "Others" pump		2"	48" x 42" x 12"
<i>SINGLE AND MULTI TANK DUAL PUMP UNITS (w/ system cabinet)</i>										
FRS 660-11-DPU-UL	11	Y	1	1" NPT	-	(2) 1hp	115-208/230 VAC	1ph / 60 hz	1"	48" x 42" x 12"
FRS 660-25-DPU-UL	25	Y	1	1" NPT	-	(2) 2 hp	115-208/230 VAC	1ph / 60 hz	1"	48" x 42" x 12"
FRS 660-11-DPU-MTU-2-UL	11	Y	2	1" NPT	-	(2) 1hp	115-208/230 VAC	1ph / 60 hz	1"	48" x 42" x 12"
FRS 660-25-DPU-MTU-2-UL	25	Y	2	1" NPT	-	(2) 2 hp	115-208/230 VAC	1ph / 60 hz	1"	48" x 42" x 12"

For a detailed list of upgrades on all models, please contact your local representative. You will find them listed at www.rcitechnologies.com under "Contacts."

Exterior view of the above listed units



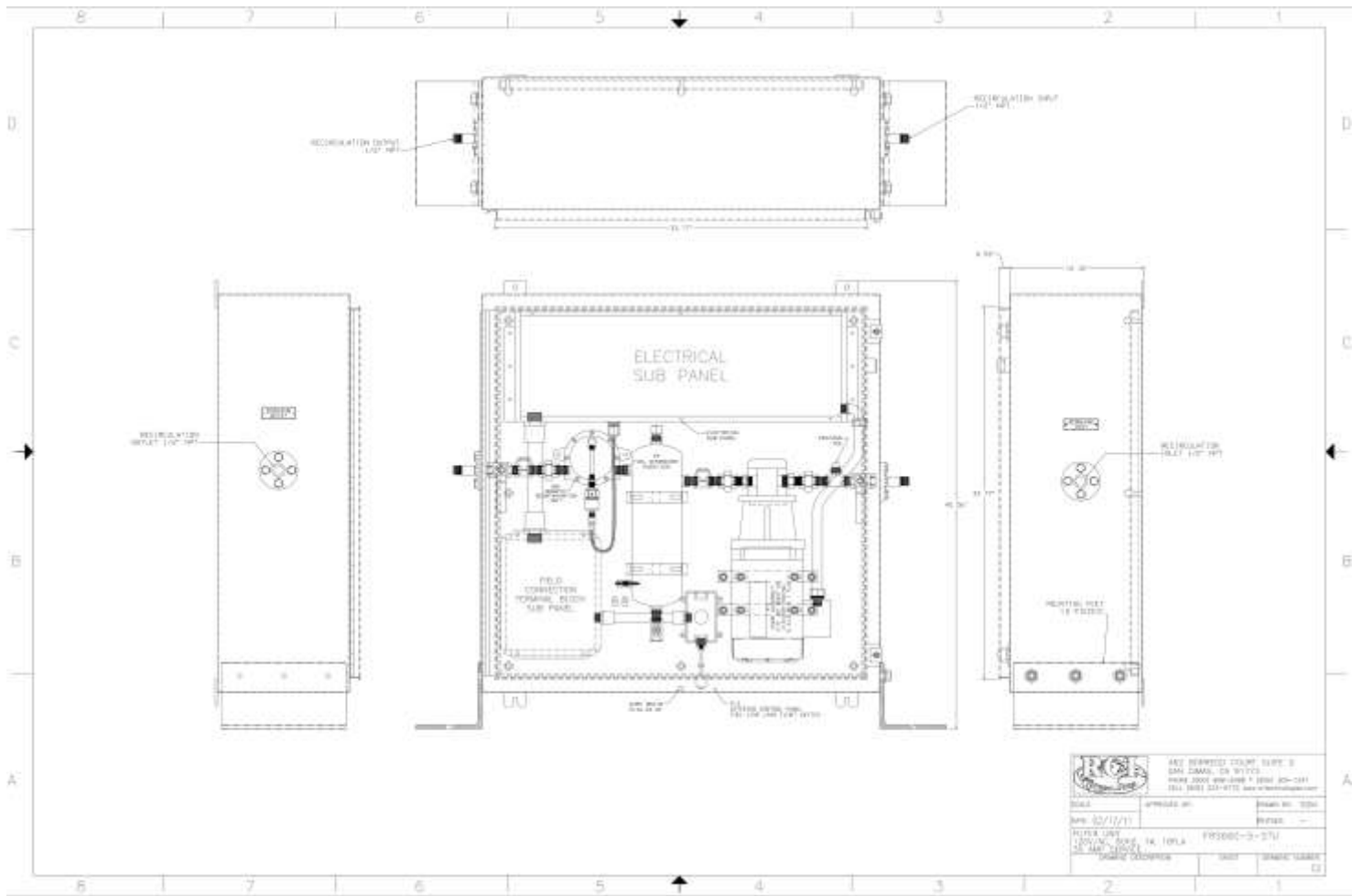
FRS 660-5-EL
FRS 660-11-EL
FRS 660-25-EL

FRS 660-5-OF
FRS 660-11-OF
FRS 660-25-OF

FRS 660-5
FRS 660-11
FRS 660-25
FRS 660-60-MTU

FRS 660-11
FRS 660-25
FRS 660-MTU
FRS 660-RPU
FRS 660-RPU-MTU
FRS 660-DPU
FRS 660-DPU-MTU

FRS 660-60
FRS 660-150



FRS 660-11-UL



*RCI Technologies
 "The Permanent Solution"
 For Protecting Your Investment*

RCI Technologies
 462 Borrego Court, Suite D • San Dimas, CA 91773
 Toll-Free US: (800) 868-2088 • (909) 305-1241 • Fax: (909) 305-1245
 www.rcitechnologies.com • E-mail: info@rcitechnologies.com